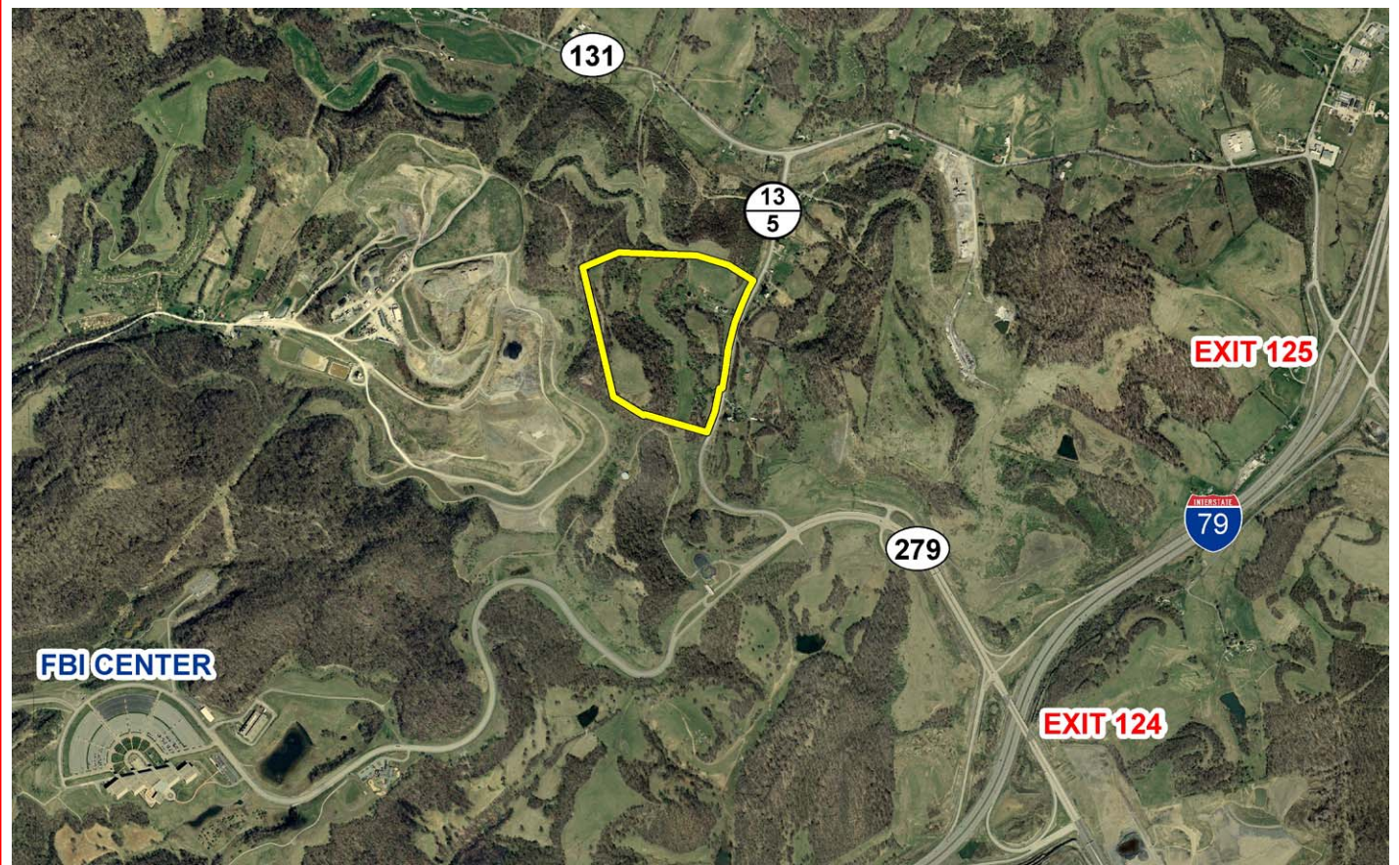




West Virginia Development Office
 1900 Kanawha Blvd., East
 Charleston, WV 25305-0311
 Toll Free: 800-982-3386
 Office: 304-558-2234

AVAILABLE PROPERTY LEONA VINCENT SITE



BRIDGEPORT, WEST VIRGINIA

LOCATION

Located in City Limits - No

County - Harrison

SIZE

Total Acreage - 55.80

Will Owner Subdivide the Property - No

Acreage Range That Owner Will Subdivide - N/A

Zoning - Rural residential or commercial

TRANSPORTATION

Interstate/4 Lane Highway - Less than 1 mile to I-79 Interchange Exit 124

Commercial Airport - 3 miles to North Central West Virginia Airport

Railroad - None

Railroad Siding - None

Navigable River - None

On-Site Barge Facility - None

UTILITIES

Electricity - Allegheny Power

Proximity to Power Line -

Voltage -

Phase -

Gas - Equitable Gas

Proximity to Gas Main -

Size of Gas Main -

Gas Pressure -

Water - Clarksburg Water Board

Proximity to Water Main -

Size of Water Main -

Water Pressure (Static) -

Water Pressure (Residual) -

Excess Capacity of Treatment Plant -

Sewer - Currently septic, possibility of city sewer in near future

Proximity to Sewer Main -

Size of Sewer Main -

Excess Capacity of Treatment Plant -

Telephone - Frontier

Switching -

Broadband Service -

SALE/LEASE

Sale Price - \$840,000

Sale Terms - Cash upon delivery of deed

Lease Price - For sale only

Lease Terms - For sale only

Available Purchase Date - Immediately

FOR FURTHER INFORMATION CONTACT

Harrison County Development Authority

Harrison County Bank, 2nd Floor

1215 Johnson Avenue

Bridgeport, WV 26330

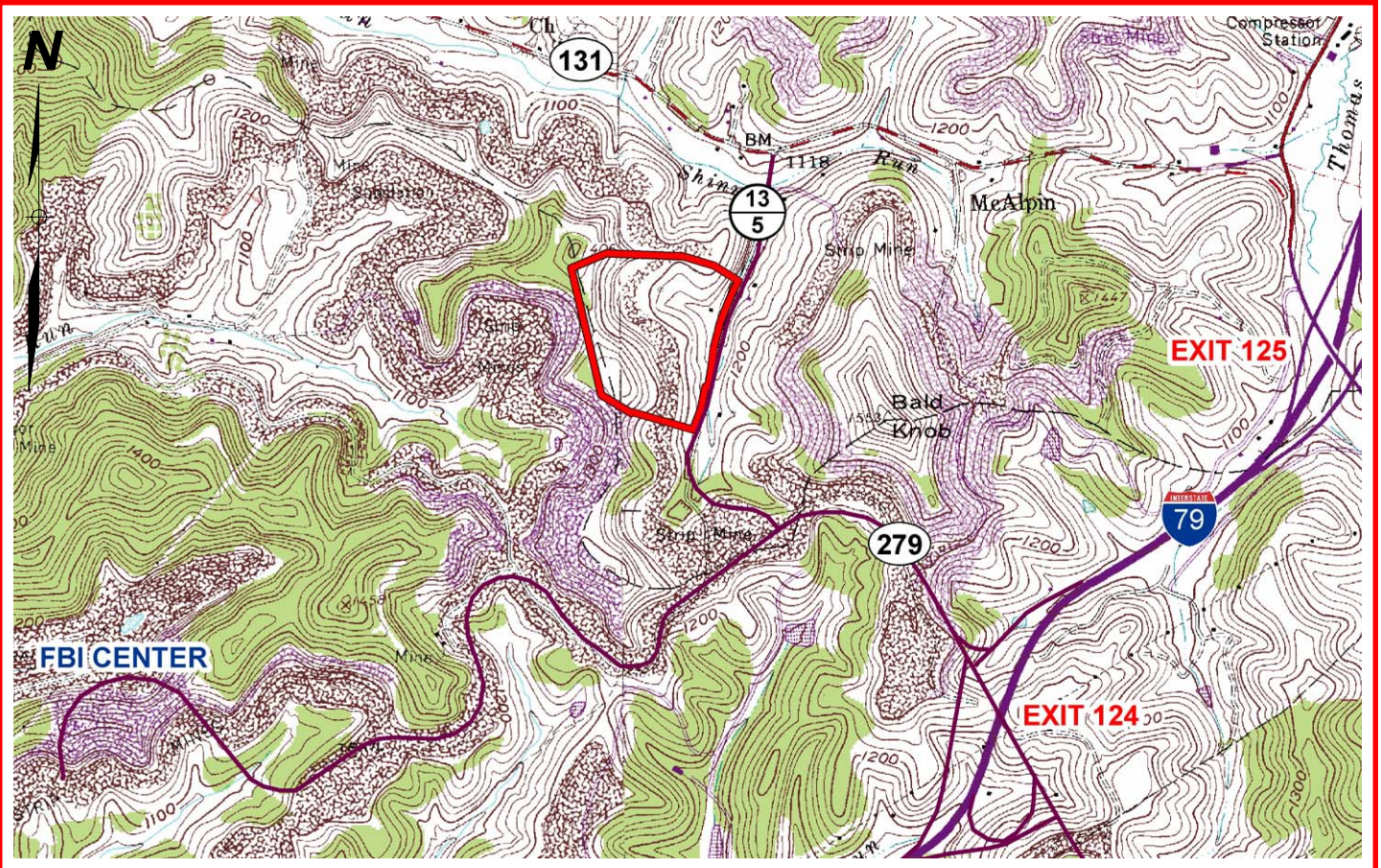
Phone: (304) 326-0213

Email: hcda@westvirginia.com

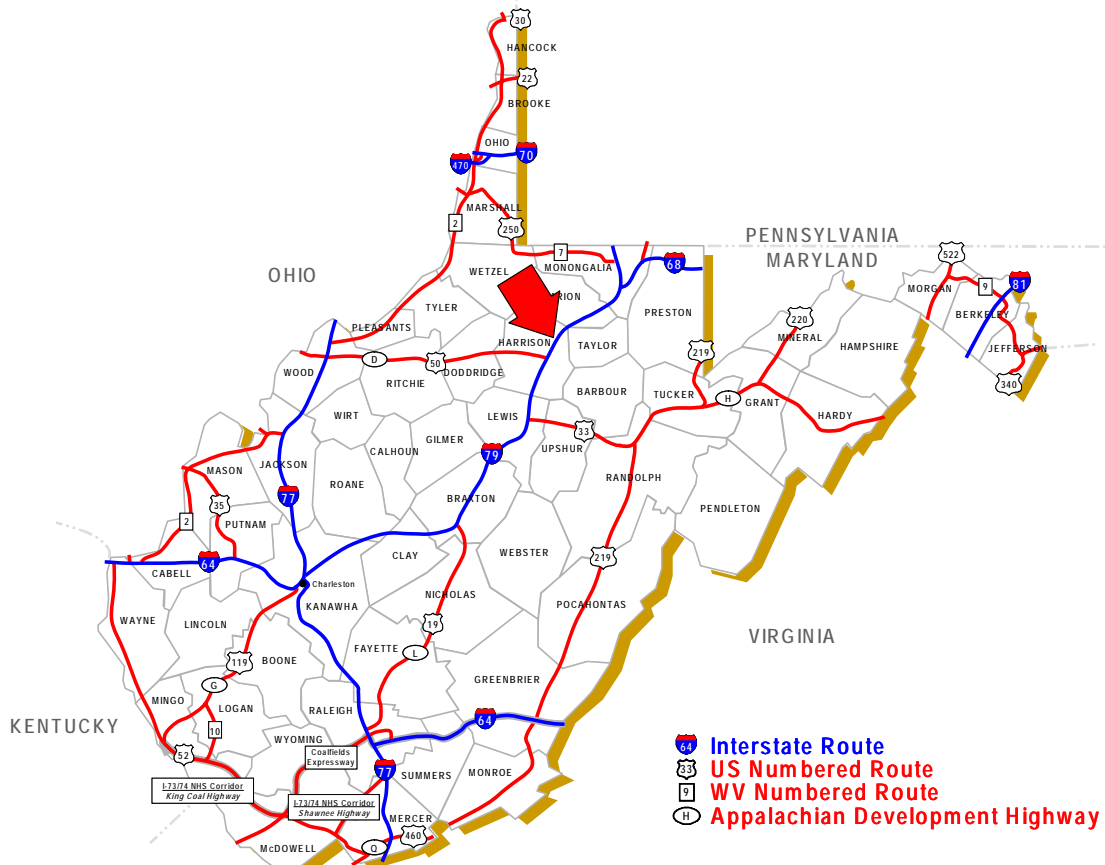
Fax: (304) 326-0215

Website: www.hcdawv.com

Disclaimer: The information contained herein is from multiple sources and is provided as a convenient guide. It is deemed reliable, but is not guaranteed, and is subject to change without notice. It is your responsibility to independently confirm its accuracy and completeness.



SCALE: 1" = 2000'



BRIDGEPORT, WEST VIRGINIA